

# Old tricks for new dogs

Applying well-worn tools to “new” policy problems

Murray Sherwin, Productivity Commission

**GEN Conference 2018**

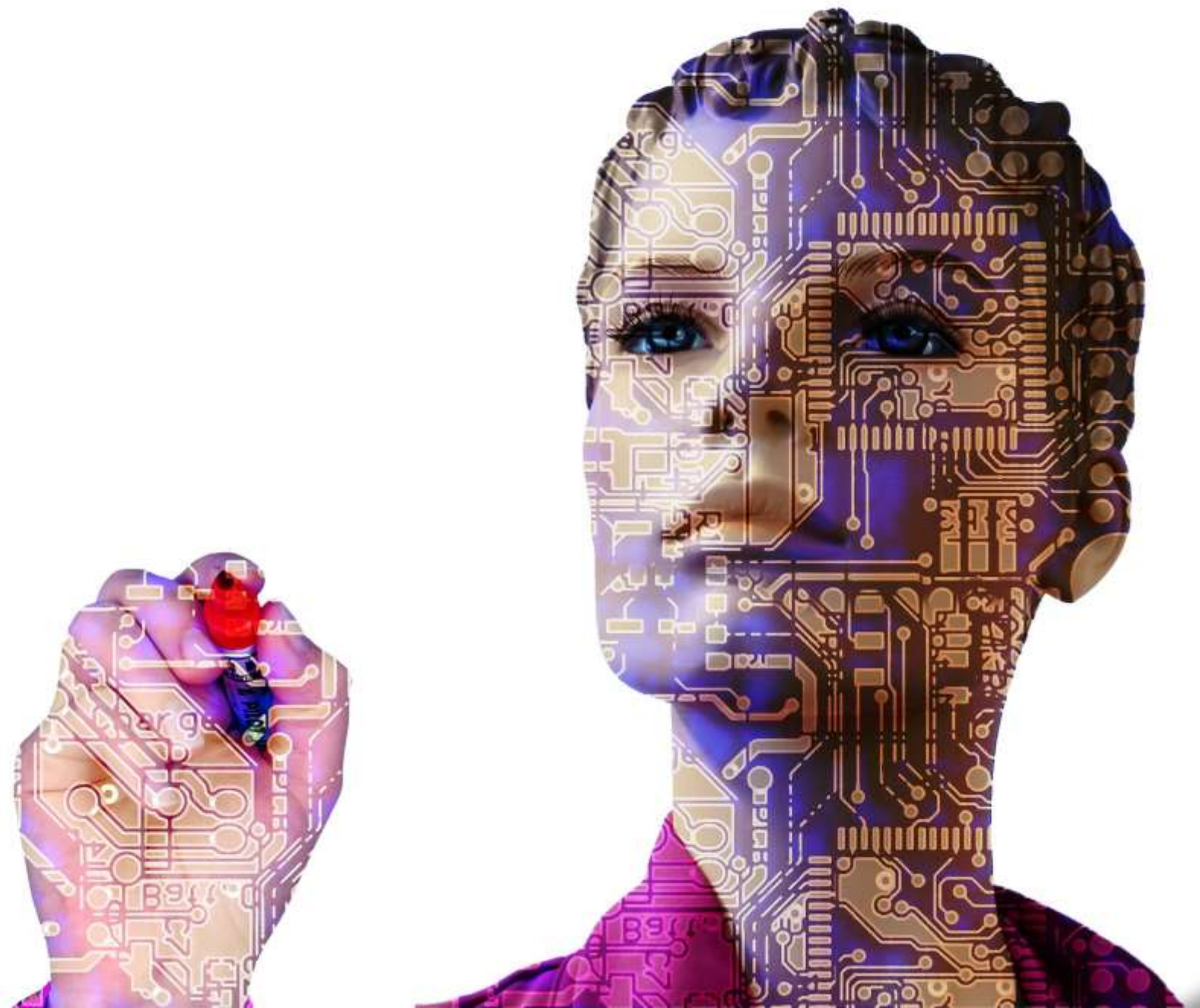
Wellington, 9 November 2018

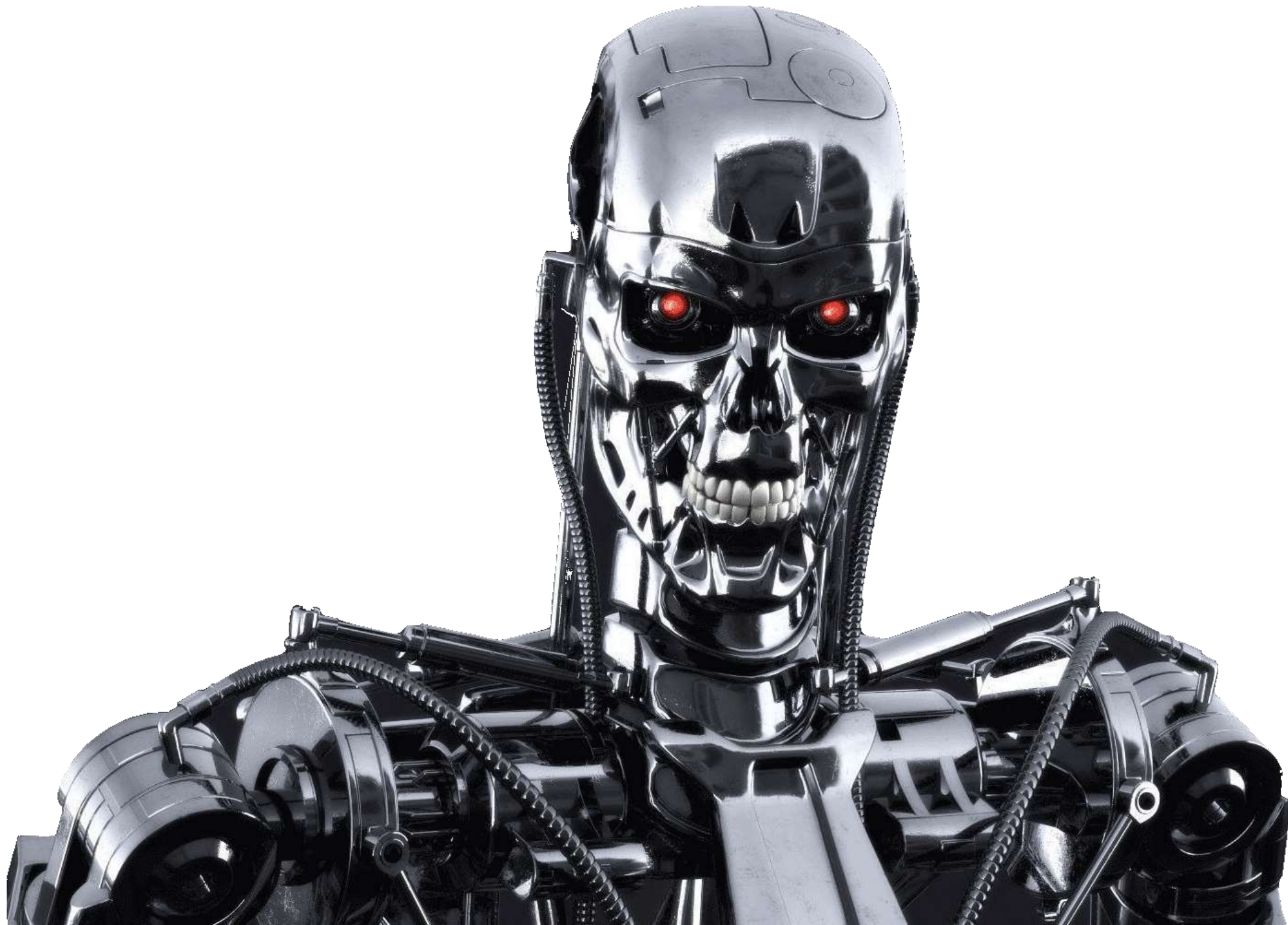










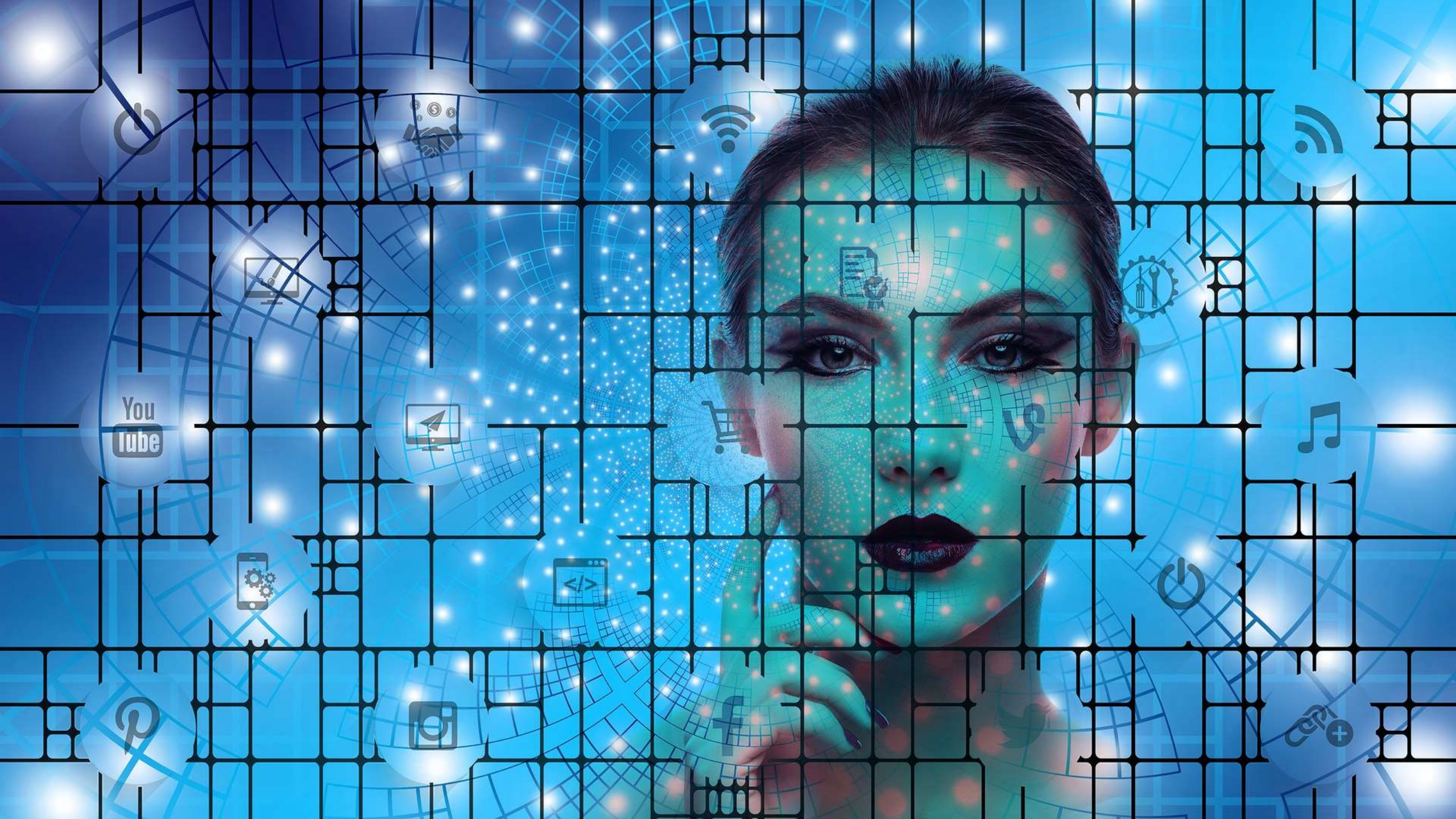




# Lessons for setting policy for possible large-scale change and uncertainty

1. The future may be unknowable, but it's examinable
2. Institutions and incentives matter
3. Put a premium on flexibility
4. Make sure there actually is a problem
5. Beware of public sector over-reach
6. Know your territory

















**USERNAME:**

Administrator

**PASSWORD:**

•••••

**LOGIN**







