

Mapping the Challenges of Effective Policy Making in a Messy World

Prof Allan McConnell
Department of Government and
International Relations

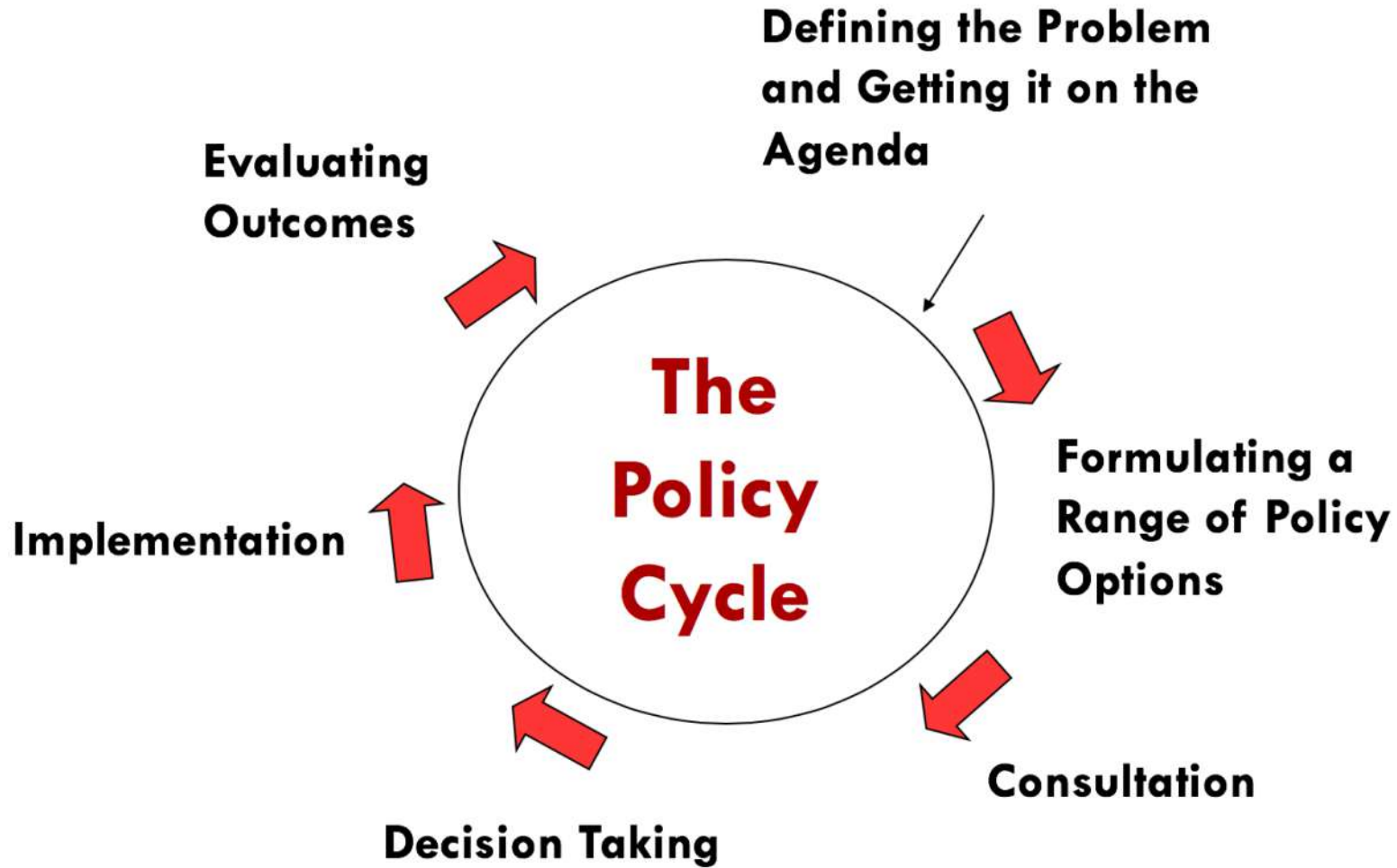
Government Economic Network
(GEN) Conference, Wellington, 9th
November 2018

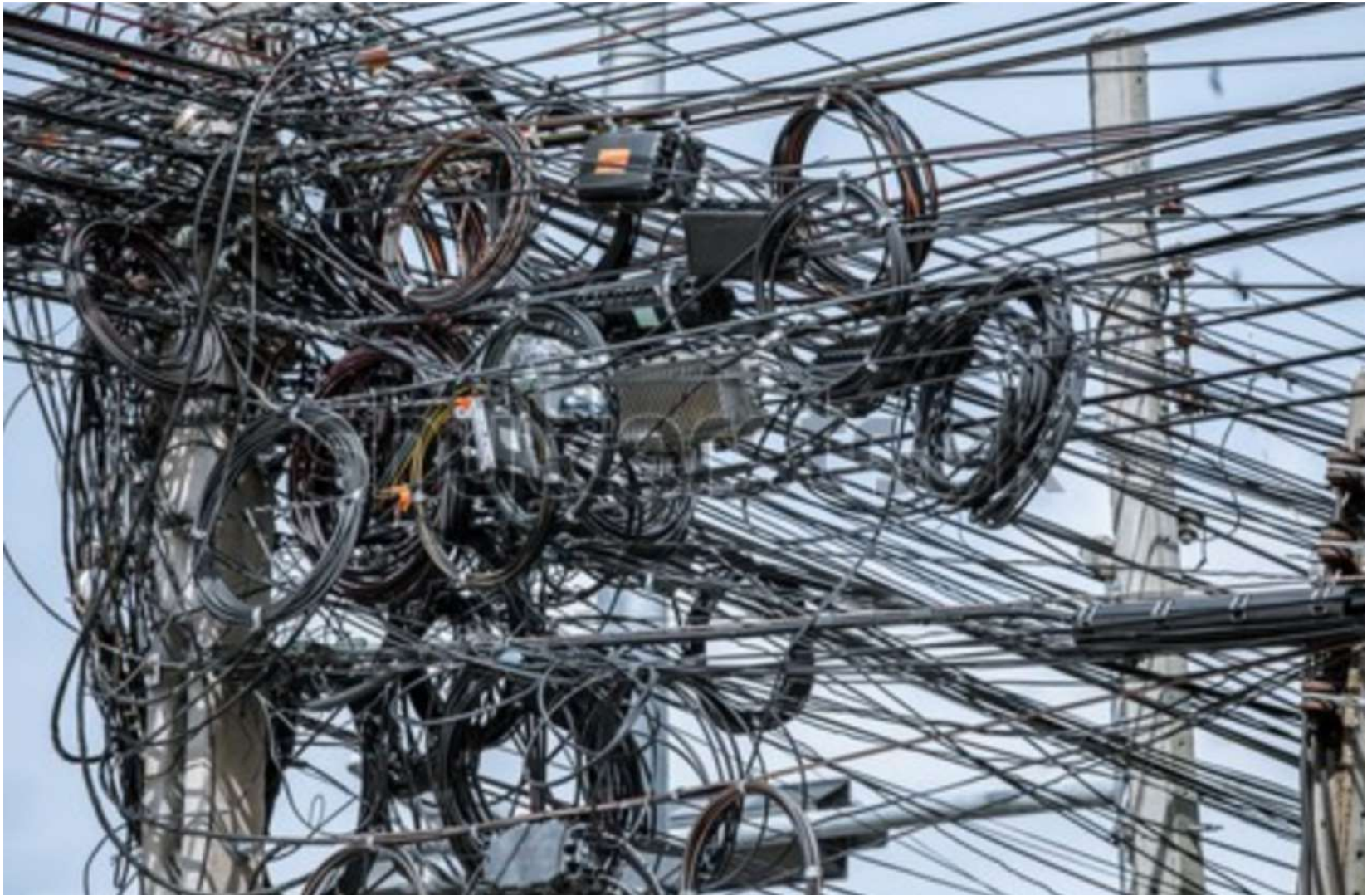


Introducing...No Magic Formula



In An 'Ideal' World





Some Reasons Why Governments Don't Always Produce Effective Policies

1. Evidence of experts needs to compete against other forms of evidence (political, economic, bureaucratic, personal)
2. Striving for effective political outcomes can marginalise the prospect of effective policy
3. Wicked problems often produce less risky policy 'solutions'
4. Some policy sectors are less liable to produce windows for change
5. Learning from success and failure is a mixed bag
6. Failures are often tolerated as a means of enabling other priorities
7. Policy making is often battle of ideas and emotions



Three Different Ways to Interpret the Barriers and Move Forward



Rules of Thumb for Influence and Effective Policy Making

1. Understand the rules of the game of your particular policy landscape
2. Use expert evidence only as one aspect of making a persuasive case
3. Appreciate that effective policies are rarely risk free
4. Incremental reform generally easier than 'big bang'
5. Prepare for windows of opportunity
6. Use effective policy stories

To Conclude.....